

# GeoCue

## PROJECT MANAGER



*Project Manager CuePac Version 4.1  
Workflow Document  
Dec 15, 2007*

9668 Madison Blvd.  
Suite 101  
Madison, AL 35758

1-256-461-8289  
[www.geocue.com](http://www.geocue.com)

# NOTICES

The material in **GeoCue** documents is protected by United States Copyright laws.

You may make as many copies of this material for use internal to your company as you desire. Please do not distribute this material outside of your company without first discussing with us.

## *Trademarks, Service Marks*

- *MapObjects* and *ESRI* are trademarks of Environmental Systems Research Institute.
- *Windows* and *.NET* are trademarks of Microsoft Corporation
- *MicroStation* is a trademark of Bentley Systems Incorporated
- *TerraScan* is a trademark of TerraSolid Oy
- *NaturalVue* is a trademark of Earth Satellite Corporation
- *ImageStation* is a trademark of Intergraph Corporation
- *Summit Evolution* is a trademark of DAT/EM Systems International
- GeoCue, NIIRS10, CuePac are trademarks of GeoCue Corporation
- SOCET SET is a trademark of BAE Systems

# *Getting Help*

This guide contains information about using the various features within PM to setup and review large projects within any GeoCue production Environment.

We are sure that you will experience different problems with GeoCue that range from installation issues to defects that made it through our testing undetected. We hope that you will immediately contact us with any problems or questions and have the patience to work with us through a successful GeoCue deployment.

Please contact us via phone or email for assistance with or comments about GeoCue and PM CuePac.

email:

[Support@geocue.com](mailto:Support@geocue.com)

Phone:

**01-256-461-8289**

Just ask for GeoCue help and you will get connected with someone who can assist you. There is usually someone in the office between the hours of 0600 and 1800 CDT, USA on weekdays. Weekends are sort of hit or miss.

Fax (always on):

**01-256-461-8249**

## *About this Document*

Welcome to the Project Manager (PM) CuePac Release 4.0 Workflow guide. Throughout this document we use the following conventions to highlight information:

Boxes outlined in **black** contain general production information and hints.

Boxes outlined in **blue** contain information about why we made a particular design decision and/or information about features that we are still working.

Boxes outlined in a **dashed blue** outline contain information about a feature that has changed since a previous version of GeoCue. This is non-applicable in this, the initial release.

Boxes outlined in **green** contain information about multiuser features of the CuePac.

Boxes outlined in **red** contain cautionary information.

## *Contents*

1	Introduction.....	1-1
2	An Overview of Project Manager.....	2-1
2.1	Invoking Project Manager.....	2-1
2.2	Project Manager Main Dialog.....	2-2
2.3	Detailed Planner.....	2-3
3	The <i>Available Projects</i> Functions.....	3-1
4	Project Properties.....	4-1
5	The Detailed Planner.....	5-1
6	Concluding Remarks.....	6-1

## 1 Introduction

The Project Manager CuePac (PM CuePac) is a collection of GeoCue tools that provide extended features for project management and review. Project Manager is designed to be used by production project managers who desire greater insight into projects, the ability to do specific task assignments and tools for examining and exporting project statistics.

Project Manager provides the ability to:

- Review top level information about a collection of projects
- Assign Project Managers, Project Planners and other designated project personnel to specific projects
- Manage project users, groups and permissions
- Assign individual technicians at the checklist step level to project entities
- Assign planned task execution times at the checklist step level
- Review detailed project statistics such as actual technician, actual production times and so forth
- Export project data to Microsoft Excel

Project Manager is a rapidly evolving CuePac. You will see significant enhancements to this CuePac over the coming months. Customers who have their GeoCue software under maintenance will automatically receive PM CuePac upgrades as they are released.

It is assumed within this document that you are thoroughly familiar with GeoCue. If this is not the case, please work through the examples in the GeoCue Workflow Guide prior to reading this guide.

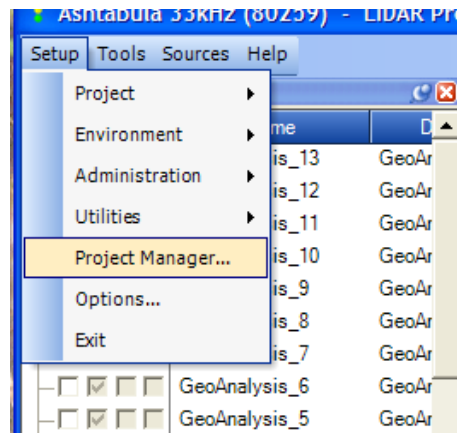
## 2 An Overview of Project Manager

Project Manager provides a number of features for both selecting and managing project data. Our intent was that project planners, project managers and job trackers would be most interested in this CuePac.

PM CuePac provides a number of tools for locating production *entities* based on a variety of selection criteria. We have included in *Entity Manager*, a core component of GeoCue, selection criteria that are process related rather than management related.

### 2.1 Invoking Project Manager

*Project Manager* is invoked from the main GeoCue menu system under **Setup**:



**Figure 2-1 Invoking Project Manager**

NOTE – If Project Manager does not appear on your Setup menu then it has not been installed on your workstation. To run Project Manager you must:

- Own a valid Project Manager CuePac License (this license will be installed on your GeoCue Server)
- Install the PM CuePac application on each workstation where you wish to run PM. Note that you can install PM CuePac on as many machines as you desire. You will be able to run as many simultaneous copies of PM CuePac as you own licenses. To check your License Status, run Database Manager on your GeoCue Server machine and visit the License Manager tab.

When you select Project Manager from the Setup menu, you will be presented the main Project Manager dialog (see Figure 2-2).

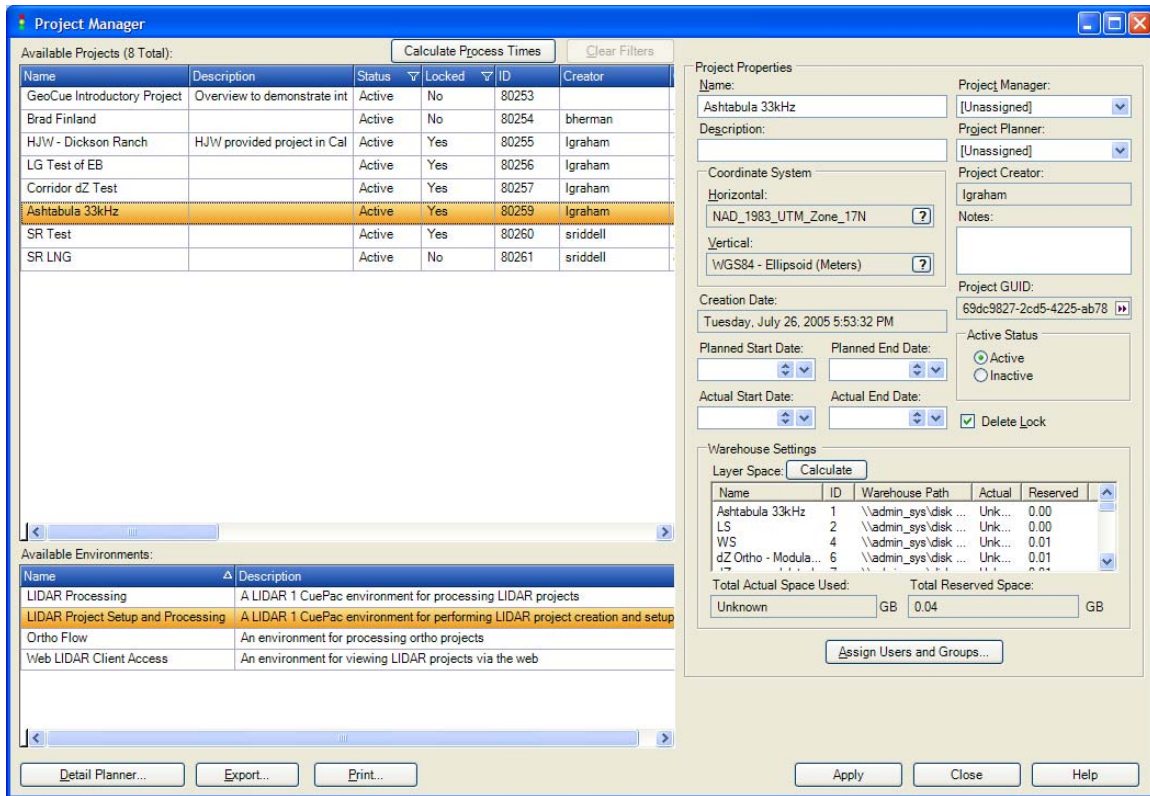


Figure 2-2 Project Manager main dialog

## 2.2 Project Manager Main Dialog

There are three sections to the Project Manager main dialog; the *Available Projects* section, the *Available Environments* section and the *Project Properties* section. The *Available Projects* section provides information about the overall projects. You can use this pane to quickly review top level statistics about all projects that are currently being managed in GeoCue. The *Project Properties* section of the Project Manager main dialog allows you to review and assign detailed top-level information about the project that is currently selected in the *Available Projects* section. Finally, the *Available Environments* selection is used in conjunction with the *Available Projects* section to choose a project and environment for viewing in the *Detailed Planner*.

## 2.3 Detailed Planner

The **Detailed Planner** portion of Project Manager allows you to:

- Select *entities* based on a wide range of selection criteria
- Link selected entities in a bidirectional manner with the Map View of GeoCue
- Set project planning values on GeoCue *Entities*
- Compute production statistics for production entities

The **Detailed Planner** section of Project Manager is invoked by selecting the desired project in the **Available Projects** pane and the associated Environment that you want to work with in the **Available Environments** section of the dialog. Pressing the **Detail Planner** button resulting in the dialog of Figure 2-3.

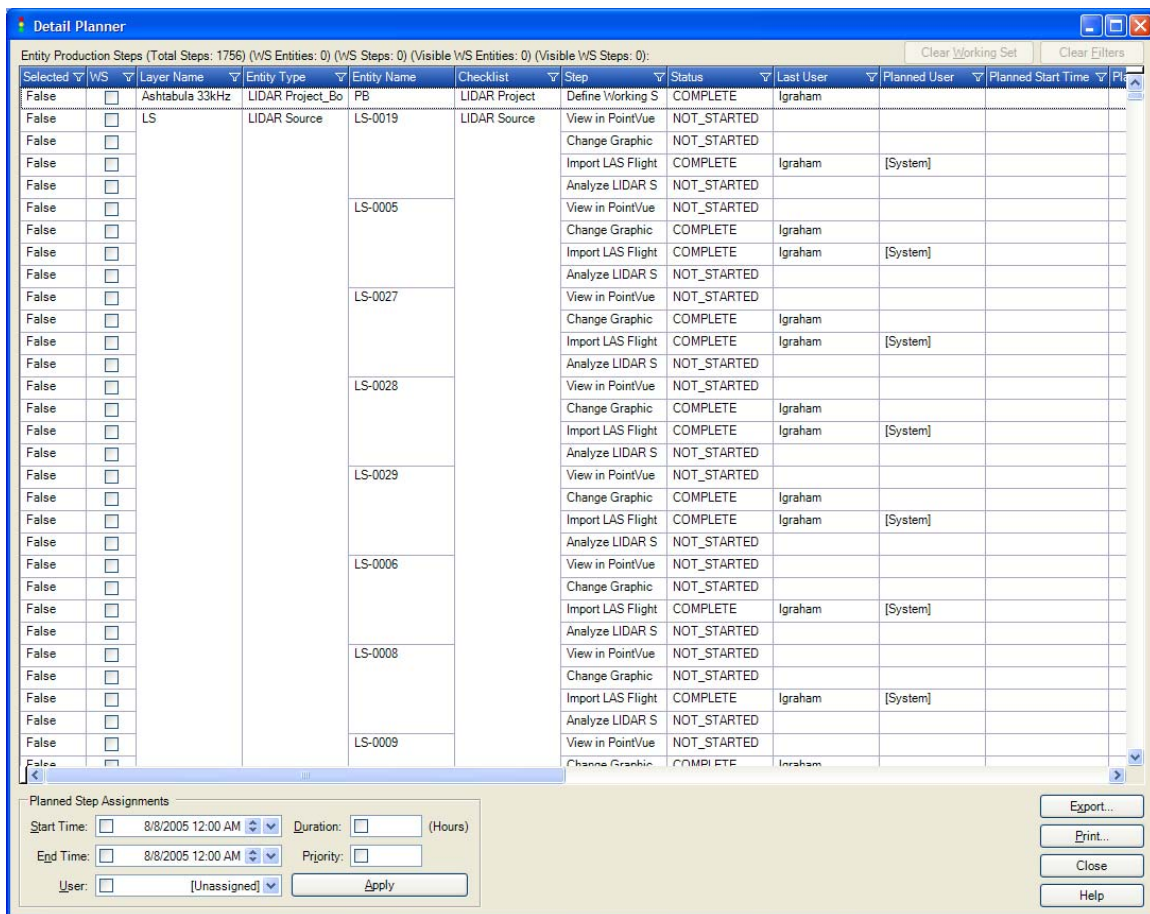


Figure 2-3 Detailed Planner dialog

NOTE – If, after launching the Detailed Planner, you see an empty dialog, you have probably selected a processing Environment that has no layers defined for the selected project. Just **Close** the detailed planner dialog and select an appropriate environment.

The following chapters provide a detailed walk through of the features of Project Manager.

### **3 The Available Projects Functions**

## **4 Project Properties**

## **5 The Detailed Planner**

## 6 Concluding Remarks

We hope that you are finding working with the GeoCue product family to be a significant increase in productivity and ease of use. Hopefully you have not discovered too many software defects (bugs).

This release of the PM CuePac provides the first set of a powerful family of the functions that will provide Enterprise management capabilities for GeoCue project. Over the next several years a number of enhancements will be included in the PM CuePac. Among our planned features are:

- Connection to Microsoft Project for *Resource Pool* services
- User customizable project notes
- A *Project Dashboard* for quick synoptic project status assessments across multiple projects

Of course, in addition to the features above, we will be adding capabilities based on your feedback.