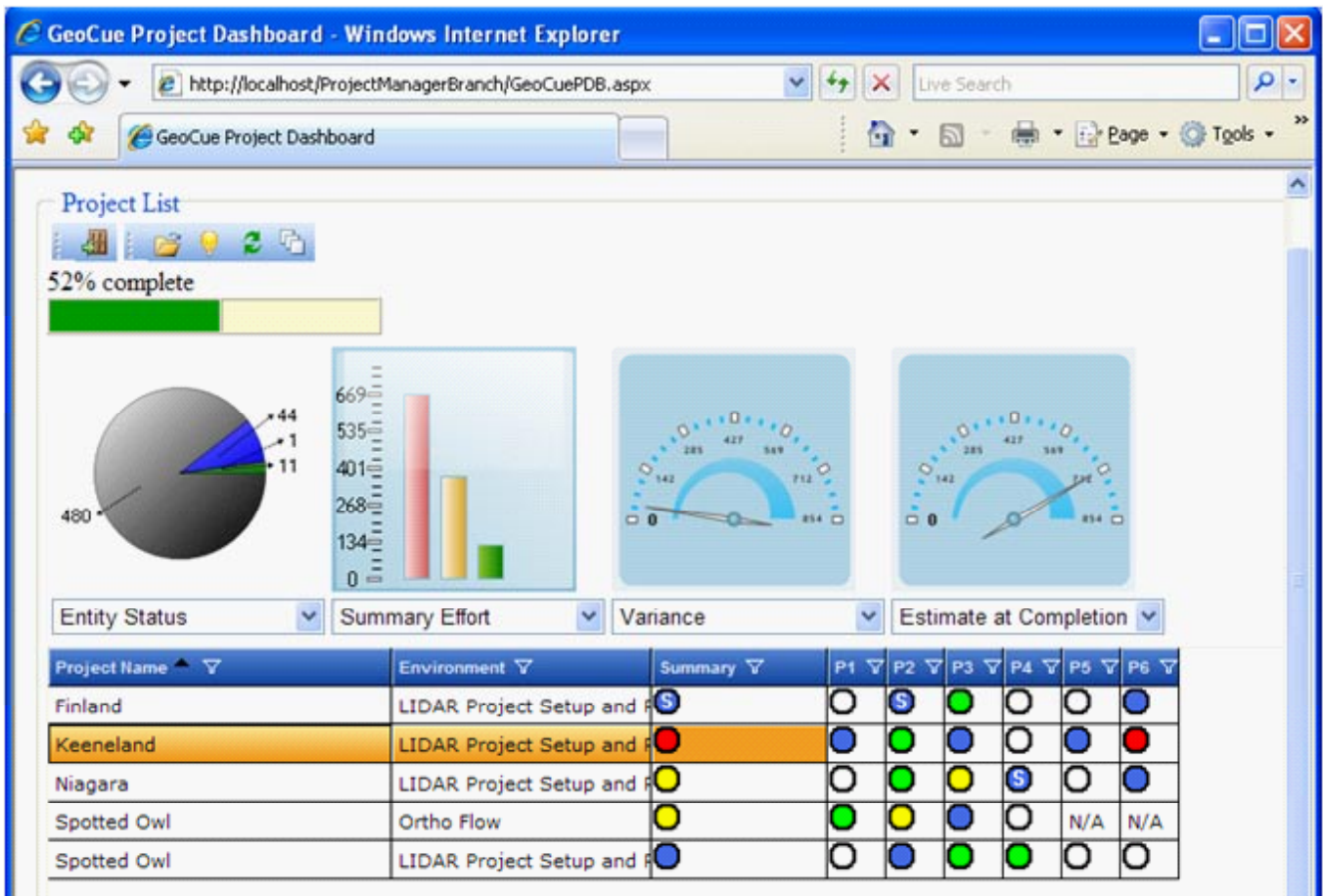




GeoCue Corporation introduces GeoCue Project Dashboard, a new web-deployed system for monitoring, updating and reporting the management status of multiple geospatial projects. Used in concert with GeoCue Project Administrator, Dashboard provides all members of your project production and management teams with a control center view of Key Performance Indicators (KPI). Through a single, web-accessible interface, team members can create, update, manage and monitor projects. Project Dashboard provides *aggregated* status views for projects integrated by GeoCue Departmental Server as well as tracking external project phases for field operations. Project Dashboard provides the real-time management tools you need to meet schedule and achieve profitability.

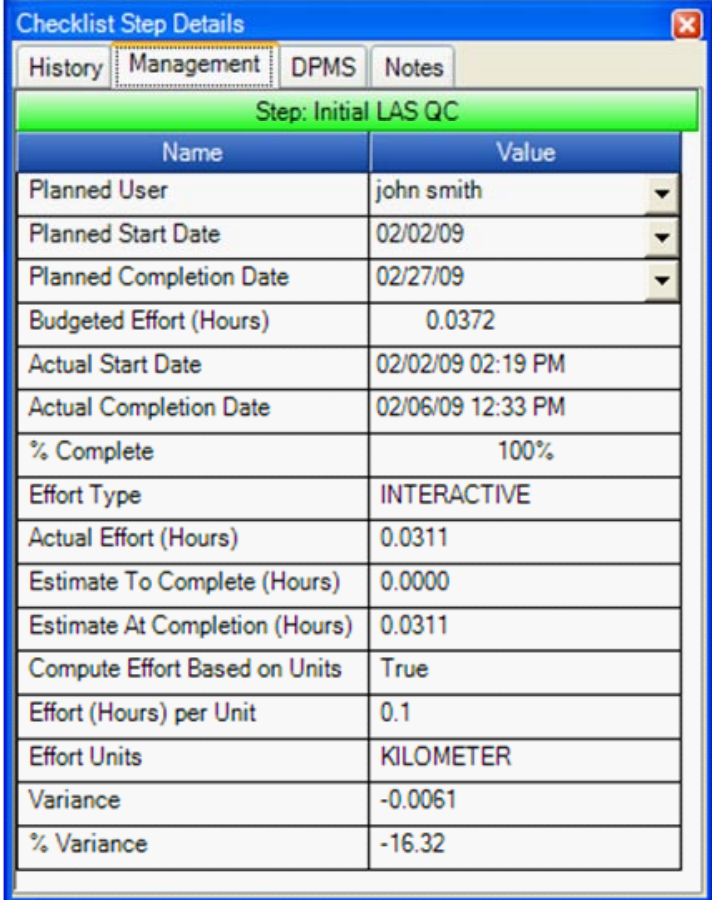


GeoCue Project Dashboard

*Project Dashboard requires GeoCue Departmental Server and at least one license of GeoCue Project Administrator.*

# AUTOMATED TRACKING

GeoCue Corporation believes that you cannot be profitable at the *macro* level if you are not managing profitability at the *micro* level. Micro management means estimating budgets for important tasks at the work unit level; examples include editing a tile of LIDAR data, performing QC on an ortho tile or rectifying a DMC™ image. We all know that manual project management at the micro level is simply not practical. GeoCue Departmental Server (accessed via GeoCue Client) provides the tools you need to automatically manage project details at the unit level. Entering planning data such as Budgeted Effort for large data sets is automated by tools that allow you to set work per unit area or unit length. GeoCue Server tracks the minutia of who worked on what, the time required, estimates to complete and other critical management metrics. The GeoCue tracking system removes the need of workers updating spreadsheets and the inherent inaccuracies associated with these “side-car” systems. Even more importantly, project metrics are maintained up to date in real-time.



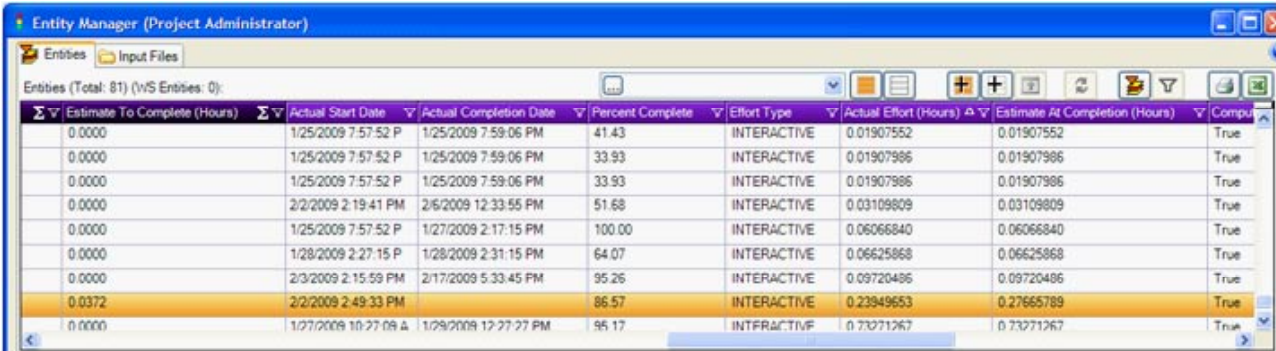
Step: Initial LAS QC	
Name	Value
Planned User	john smith
Planned Start Date	02/02/09
Planned Completion Date	02/27/09
Budgeted Effort (Hours)	0.0372
Actual Start Date	02/02/09 02:19 PM
Actual Completion Date	02/06/09 12:33 PM
% Complete	100%
Effort Type	INTERACTIVE
Actual Effort (Hours)	0.0311
Estimate To Complete (Hours)	0.0000
Estimate At Completion (Hours)	0.0311
Compute Effort Based on Units	True
Effort (Hours) per Unit	0.1
Effort Units	KILOMETER
Variance	-0.0061
% Variance	-16.32

Production Management Metrics in GeoCue

# GEOCUE PROJECT ADMINISTRATOR

Designed for Production Managers, GeoCue Project Administrator provides tools for assigning and assessing production management metrics at the work unit (micro) level. Graphically linked to the GeoCue Map View, Project Administrator makes quick work of assigning Budgeted Effort, planning dates and

anticipated production workers to thousands of individual work units. Project Administrator also provides tools for exporting detailed project information to Microsoft Excel® for derived unit level reports, such as individual efficiency.



Estimate To Complete (Hours)	Actual Start Date	Actual Completion Date	Percent Complete	Effort Type	Actual Effort (Hours)	Estimate At Completion (Hours)	Compute
0.0000	1/25/2009 7:57:52 P	1/25/2009 7:59:06 PM	41.43	INTERACTIVE	0.01907552	0.01907552	True
0.0000	1/25/2009 7:57:52 P	1/25/2009 7:59:06 PM	33.93	INTERACTIVE	0.01907986	0.01907986	True
0.0000	1/25/2009 7:57:52 P	1/25/2009 7:59:06 PM	33.93	INTERACTIVE	0.01907986	0.01907986	True
0.0000	2/2/2009 2:19:41 PM	2/6/2009 12:33:55 PM	51.68	INTERACTIVE	0.03109809	0.03109809	True
0.0000	1/25/2009 7:57:52 P	1/27/2009 2:17:15 PM	100.00	INTERACTIVE	0.06066840	0.06066840	True
0.0000	1/28/2009 2:27:15 P	1/28/2009 2:31:15 PM	64.07	INTERACTIVE	0.06625868	0.06625868	True
0.0000	2/3/2009 2:15:59 PM	2/17/2009 5:33:45 PM	95.26	INTERACTIVE	0.09720486	0.09720486	True
0.0372	2/2/2009 2:49:33 PM		86.57	INTERACTIVE	0.23949653	0.27665789	True
0.0000	1/27/2009 10:27:08 A	1/29/2009 12:27:27 PM	96.17	INTERACTIVE	0.73271267	0.73271267	True

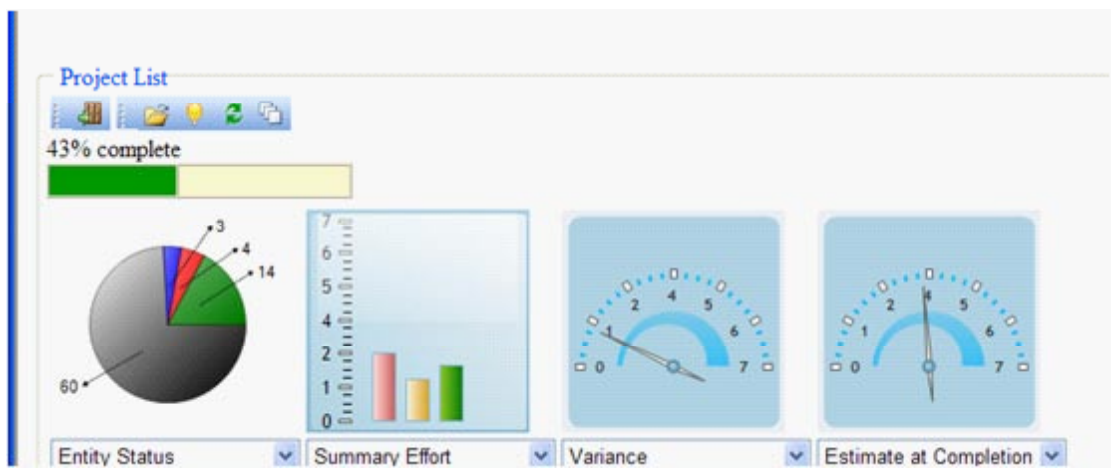
Project Administrator showing micro details

# MULTI-PROJECT SYNOPTIC STATUS VIEWS

GeoCue Project Dashboard provides a complete, Service Oriented Architecture (SOA) web-based environment for creating and monitoring projects that comprise data linked from GeoCue projects as well as external steps that are not associated with GeoCue tracked entities. Project Dashboard allows you to define your own project management phases and sub-phases and track these user defined projects in a simple but robust web interface. Project Dashboard aggregates the micro details

collected by GeoCue Departmental Server into an easy to assess dashboard status view. For example, a pie chart view of entity status can provide a quick assessment of the state of hundreds

of entities that must be completed in order to finish a project phase (think of quickly assessing the status of the QC task of a county-wide ortho project). External phases such as Plan Survey, Collect Survey Points and so forth can be managed within Dashboard projects as external phases. Accessing Dashboard under a Worker role, field deployed staff can directly update external task status using a web browser from any location with internet access.



Linked Phase Information

# TOTAL INFORMATION MANAGEMENT

Project Dashboard aggregates management metrics across all phases and sub-phases of a project. By simply clicking on

the project summary icon, managers and executives are provided up-to-date views of all relevant project tracking data such as Budgeted Effort, Estimate to Complete, Variance and so forth. Dashboard can even provide comparisons to external financial tracking information. Fully aware of GeoCue's Distributed Processing System, Project Dashboard maintains segregated metrics for 'human' work and 'machine' work.

Interactive:		System:	
Field	Value	Field	Value
Planned Start Date	1/25/2009	Planned Start Date	NOT SET
Planned Completion Date	2/27/2009	Planned Completion Date	NOT SET
Actual Start Date	1/25/2009	Actual Start Date	1/25/2009
Actual Completion Date	NOT SET	Actual Completion Date	NOT SET
Project Manager	lewis graham	Project Manager	lewis graham
Budgeted Effort (BE)	67.13	Budgeted Effort (BE)	1.45
Actual Effort (AE)	13.11	Actual Effort (AE)	2.73
Estimate to Complete (ETC)	9.56	Estimate to Complete (ETC)	0.01
Estimate At Completion (EAC)	22.67	Estimate At Completion (EAC)	2.74
Percent Complete	57.82%	Percent Complete	99.79%
Variance (Var)	-44.462	Variance (Var)	1.289
Percent Variance	-66.23%	Percent Variance	88.94%
		Pending	0

Project Data Aggregation

# ANALYSIS VIEWS & ALERTS

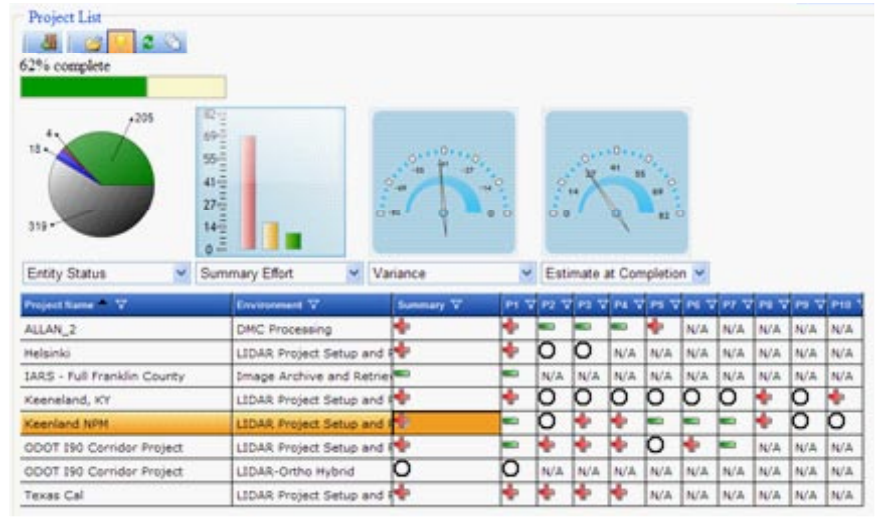
It is not enough to know if a phase completed on time. Often the more critical question is “did it complete on budget?”

GeoCue Project Dashboard provides unique views to quickly assess various attributes of the phases of a project. These views include variance, schedule, external financial system comparison, and estimate at completion accuracy assessment.

Project Dashboard even provides projections of the completion status of phases that link to multiple entities by computing projected phase variance and algorithmically computed percent complete.

GeoCue Project Dashboard allows you to set the conditions under which various warnings and errors are reported. For example, you might set an Edit phase to trigger a Warning if the phase is three days beyond the planned

start date yet no edits have begun. This trigger would cause the phase icon to appear in yellow, signifying a warning. Each trigger in the system can also be tied to an e-mail event. The warning trigger just described could be mapped to send an e-mail to the phase managers.



Variance View

# INTEGRATION SERVICES

GeoCue Corporation provides a full range of integration and consulting services aimed at improving the efficiency and profitability of your production workflow. Now, with Project Dashboard, we are able to offer a top-down approach to process improvement. We can assist you in immediately deploying Project Dashboard with all manual phases followed by an incremental plan to integrate processes into GeoCue.

This approach provides you with tangible results from day one. Imagine the productivity gains you will realize by taking a holistic approach to integrating your workflow processes into the GeoCue framework suite of products. Finally all levels of management will have timely and accurate views of the true state of production. This adds value to your entire organization.



**GeoCue Corporation**  
9668 Madison Blvd., Suite 101  
Madison, AL 35758  
Phone: 256-461-8289  
Fax: 256-461-8249  
e-mail: info@geocue.com  
www.geocue.com

DMC is a trademark of Intergraph Corporation.  
GeoCue and CuePac are registered trademarks of  
GeoCue Corporation.