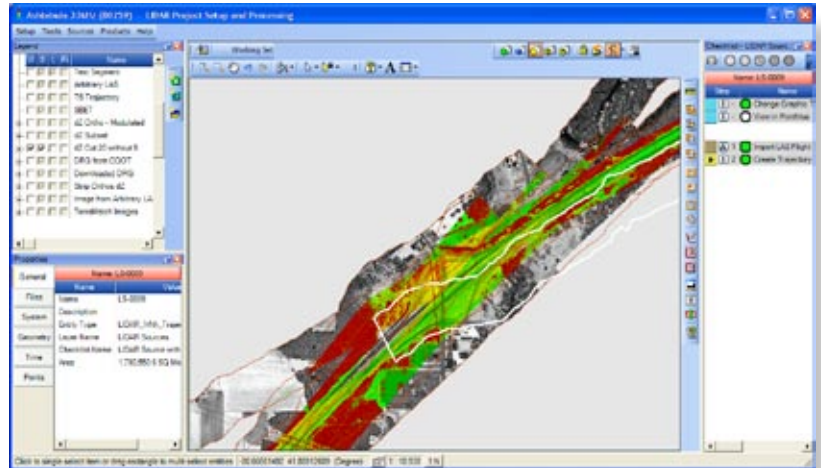


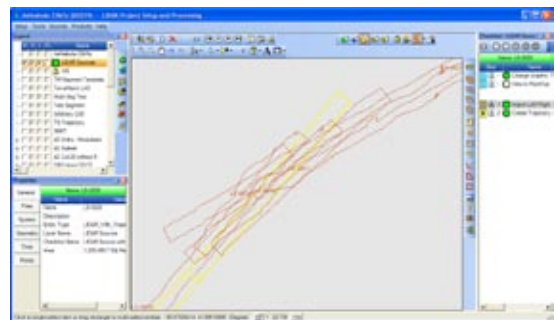
## ROBUST, MULTIUSER LIDAR PRODUCTION ENVIRONMENT

LIDAR 1 is an application personality module (CuePac) for GeoCue, our geospatial integration framework. LIDAR 1 provides the tools to integrate your TerraScan-based LIDAR processing workflow into a managed, synoptic production environment. The bottom line result is faster, higher quality and more profitable jobs.

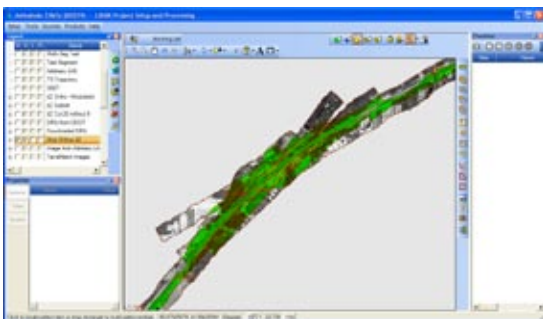


LIDAR data are notoriously difficult to process due to their inherently unorganized structure and sheer volume. GeoCue with LIDAR 1 provides a high performance LIDAR production environment with features such as:

- Graphical project management and control clients that provide a real-time project view across your entire company
- A centralized process and data management repository

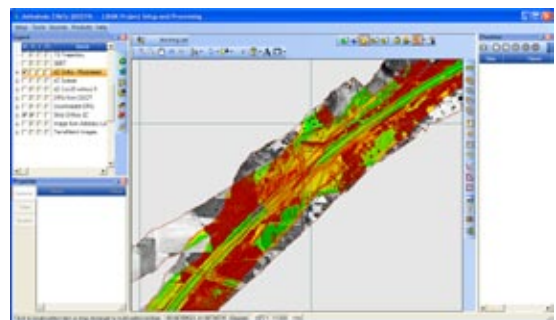


*Import Data*



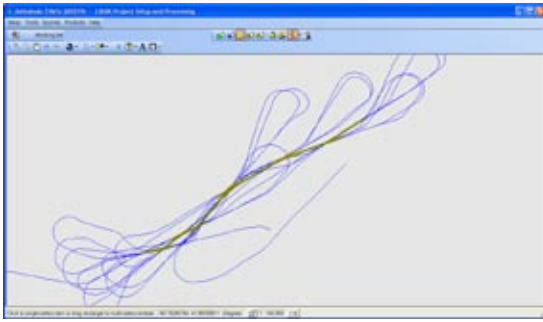
*Visualize Coverage*

- Support for project reference data such as scanned maps and orthophotos
- Tools to import LIDAR data and display true ground footprints
- Analysis tools to verify project coverage quality



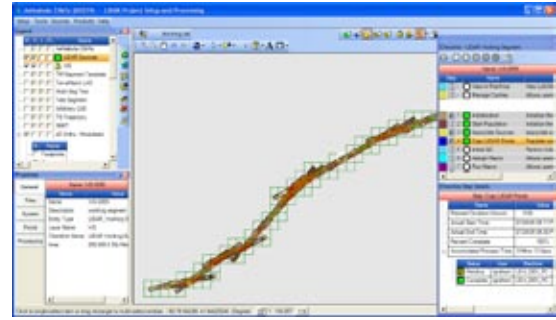
*Analyze Accuracy*

- Delta Z analysis image creation to quickly assess accuracy
- Import and display of Applanix SBET data
- Automatic creation of TerraScan trajectories from SBET
- Integrated PointVue for 3D visualization of LIDAR data



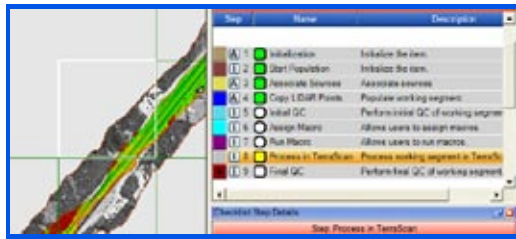
*Manage Trajectories*

- A complete set of functions for planning 'work segment' processing including assignment of process steps and production operators



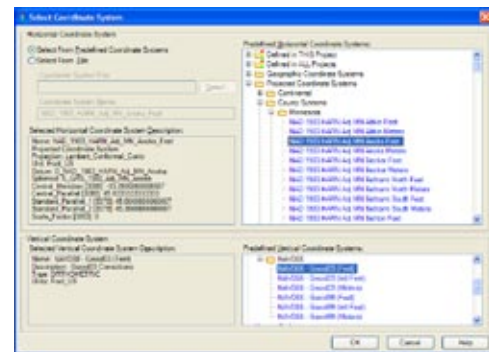
*Manage Multiple Technicians*

- Multiuser workflow management tools for locking work segments, invoking production tools and managing/reporting problems
- Seamless integration with TerraScan for LIDAR filtering and editing
- TerraScan macro library assignment and application tools



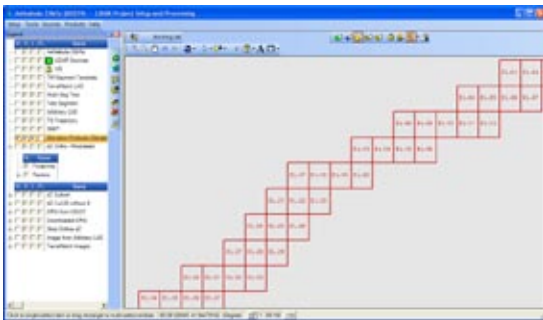
*Graphically Drive TerraScan*

- Distributed processing of batch operations such as TerraScan macro processing (Enterprise Version)



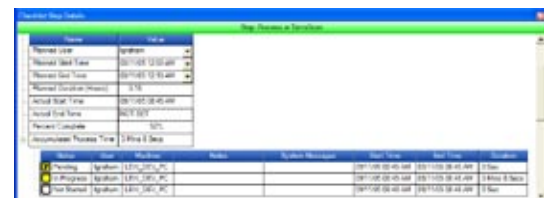
*Transform LIDAR Data*

- Full support for horizontal and vertical (including geoid) coordinate transformations of LIDAR data



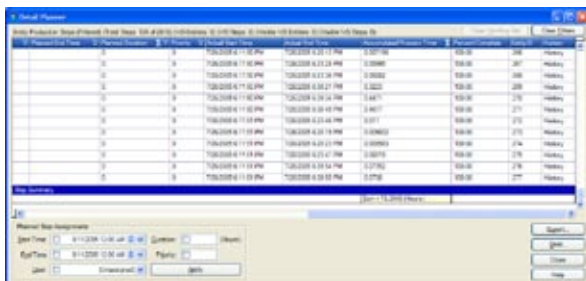
*Produce Elevation Products*

- Merging tools for combining work segments into products



*Detailed Production History*

- Complete, system-wide real time status viewing
- An optional web-deployable viewing system with 'definable' views to allow you to keep your customer 'in the loop'



*Post Production Assessment  
(Requires optional Project Manager CuePac)*